

AURA

ComPar KIT 3 DMX COB LED light kit with power outputs



User manual

Any information and illustrations shown in this user manual are subject to change without further notice.

User manual version: 1.0 Creation date + author initials: 22-04-2015 RV Revision date + author initials: -

Introduction

Thank you for purchasing the Ayra ComPar Kit 3. This powerful lighting kit features powerful COB LED technology, ensuring an impressive light output and optimal colour mixing. This user manual gives you some insight into the options of this powerful kit.

Read this user manual before you set up the system, and familiarise yourself with the product and its accessories. Also check the box contents for possible damage or missing parts.

If you encounter any problems during use, contact your local dealer for more information and help.

The Ayra ComPar Kit is a versatile lighting system, used for entertainment purposes. It is an ideal system for mobile DJs, solo entertainers and bands who wish to add colourful changing lights to their performance, creating a powerful atmosphere.

The ComPar Kit consists of a bar with four mounted projectors, each of which can be individually adjusted and aimed. It is possible to cross beams, or make a fan shape using all projectors. The options are virtually limitless.

Each ComPar Kit projector uses an RGB colour mix system., enabling you to choose between thousands of colour tones for each projector. You can also use of the built-in features of the system, such as the sound-activated mode or the built-in colour presets. It's possible to link multiple fixtures in a master-slave mode as well. Select the DMX mode for advanced control, and use a DMX controller to operate the complete bar or each individual projector.

The all-new ComPar Kit series features built-in power outlets, enabling you to daisy-chain power to other light effects. Combined with the possibility of incorporating other (third-party) projectors directly into the system, you are able to create a unique light setup for almost any venue.

Any information and illustrations shown in this user manual are subject to change without further notice.

User manual version: 1.0 Creation date + author initials: 22-04-2015 RV Revision date + author initials: -

Safety instructions



WARNING!



Always keep this device away from moisture and rain! Hazardous electric shocks may occur!



WARNING!



Only connect this device to a matching power outlet. This device is intended to work on a specified AC currency. Connecting this device to power outlets with other voltages may result in permanent damage and possible hazardous situations, such as fire or electric shocks!



WARNING!



Be careful with every operation of this device. Touching live wires inside and outside the unit may cause hazardous electric shocks!

This unit must be operated by, or under the supervision of an adult. This device is not suitable for children.

Every person involved with the installation, operation and maintenance of this device has to:

- Be qualified
- Follow the instructions of this manual
- Make sure there is no damage caused by transport. If the device seems damaged from the outside, do not use it and contact your dealer for more information.
- To make sure the device remains in perfect condition and for safe operation, the user must follow the instructions and warning notes of this user manual.
- Damage caused by improper use or modifications to the device are not covered by the warranty.
- This device does not have any user-serviceable parts inside. This device must be serviced by qualified technicians.
- The light source of this device is not replaceable. When the light source reaches its end of life, the whole luminaire must be replaced.

Important notes regarding safety and health:

- Never let the power cord come in contact with other cables. Handle the power cord and all mains connectors with caution.
- Never remove any warning or informative labels from the unit.
- The ground contact must be connected at all times. Do not cover or remove the ground contact.
- Never leave cables lying around.
- Do not open the device and do not modify any hardware or software.
- Do not insert objects into air vents of this device.
- Do not connect this device to a dimmer pack.
- Do not switch the system on and off frequently, as this will reduce the lifespan of the device.
- Do not drive the inputs of the fixture with a signal greater than required to work at full performance.

Any information and illustrations shown in this user manual are subject to change without further notice.

User manual version: 1.0 Creation date + author initials: 22-04-2015 RV Revision date + author initials: -

- Only use this device indoors, avoid contact with water, moisture and other liquids. Do not place items filled with liquids on top of the unit.
- Avoid nearby flames or heat sources, do not place this device near flammable liquids, gas or flammable items.
- Always disconnect the device when it is not in use for a longer period or time, when servicing is needed, or when the device needs cleaning.
- Only handle the power cord by its connectors. Never pull the cable to remove a connector from its socket, as this could lead to damage and electric shocks.
- Always operate this device with a stable AC current.
- Always operate this device with the AC ground wire connected to the electrical system's ground.
- Never use other types of cables than specified in the manual, do not use defective or malfunctioning cables. Contact your dealer if the included or required cables do not work properly with this device.
- If the device has been exposed to considerable temperature changes (for example, transport from outdoors to indoors), do not connect the device immediately. Do not activate the unit until it has reached room temperature, as moisture might build up inside the unit, which may cause short-circuiting and/or electric shocks.

Guidelines and types of use:

- This device is intended to be used by professionals on stage, in theatres, clubs and similar venues.
- This device is used for light effects and entertainment purposes. This product is not suitable for regular household room illumination.
- This device is not suitable for use by children and must always be operated by an adult.
- Only use the device when the environment is suitable and will not cause any damage. Do not use the product in moist or dusty environments, or where long-term damage may occur such as:
 - indoor swimming pools where chlorine is used.
 - Beaches, where sand and salt are present.
 - Outdoors.
 - Indoor areas where intense heat sources are present or where the temperature exceeds levels that are comfortable for humans.
- Use only the included power cable and only connect the device to a suitable power outlet with the correct output voltage. Connecting the device to a power outlet with the wrong type of voltage or using the product with a wrong type of power supply may cause permanent damage to the device.
- Avoid shocks and collision during use and transport. Do not transport the device while in use. Avoid brute force during the installation and operation of this device.
- Familiarise yourself with the functions of the device before use. Do not allow operation of the device by unskilled or unqualified people.
- Use of the device in other ways than described in this user manual may cause damage and injury. Ayra cannot be held responsible for any damage or injury caused by improper use.

Storage and transport:

- This device is intended for mobile use as well as fixed installations. During transport, use the original packaging of the product, the included flight bag or a fitting flight case, preferably filled with foam.
- This device is not intended for continuous use. Operation breaks will ensure that the lifespan of the device is not reduced.
- If the device is not used for a longer period of time, disconnect it from its power source and store it in its original packaging, or in a fitting flightcase.
- Store the device dry and indoors, and do not expose the device to extreme temperature changes.

Housing:

- Inspect the housing of the device frequently. Severe dents, cracks and missing screws should be prevented at all costs. Do not use the device when the housing is not in optimal condition. Contact your dealer or a skilled technician when in doubt about the state of the device.
- Check the fixture and screws for corrosion. Corrosion should not be present on the fixture. Contact your dealer or a skilled technician when corrosion is found on the fixture.
- Every power or signal chassis/connector should be mounted tightly. Do not use the device when connectors are loose.
- Do not use the power cord if the cores are visible. Contact your dealer for a replacement if needed.
- Prevent the build-up of dust and dirt. Clean the exterior of the fixture every month with a dry or damp cloth. If the device is intensively used, the cleaning frequency must be increased. Disconnect the fixture when it is

Any information and illustrations shown in this user manual are subject to change without further notice.




User manual version: 1.0 Creation date + author initials: 22-04-2015 RV Revision date + author initials: -

going to be serviced.

Fuses:

- The main fuse of this device can be found on the rear of the device, usually next to the power inlet.
- Only replace the fuse for a new one of the same type and rating! Do not use a fuse with a higher or lower rating.
- Do not bridge the fuse in any way, as the fuse is used for protection against electric shocks and short-circuiting. The fuse is a safety measure to protect your audience from hazardous electric shocks.
- Always replace the fuse cover over the fuse compartment. Do not use tape or other fastening materials to close the cover. If the fuse holder is broken, contact your local dealer and do not use the fixture.

Symbol clarification:

	<p>WEEE: Dispose of this product properly. This product is part of the WEEE directive – the Waste Electrical and Electronic Equipment directive. The requirements stated in this directive apply to all manufacturers and producers of electronic equipment in the EU.</p> <p>Do not dispose of this product together with regular household rubbish. Contact your local government for more information about proper disposal and recycling of electronic products in your region. By recycling this product properly after use, we can work together to enjoy these products and also protect our environment from being polluted.</p>
	<p>CE: The CE mark indicates that the product complies with applicable European directives and regulations.</p>
	<p>Indoor use only: This device is designed to only be used indoors. The maximum ambient temperature should not exceed 40 degrees Celsius (104 degrees Fahrenheit)</p>

Any information and illustrations shown in this user manual are subject to change without further notice.

User manual version: 1.0 Creation date + author initials: 22-04-2015 RV Revision date + author initials: -

Box contents

Box contents

1x Ayra ComPar Kit 3
1x light stand
1x foot controller with connection cable
1x padded case for ComPar Kit 3
1x light stand bag
1x power cable IEC C13 to Schuko (3x 1mm²)
1x power cable IEC C13 to UK plug (3x 1mm²)
2x uplighting feet
6x tightening knob

Unit and accessory inspection

- Always use the supplied power cable to connect the unit to a power supply. If the cable appears broken or has visible damage, do not use it.
- If the unit is not going to be used for a longer period of time, disconnect it from the power supply and store it in a dust-free environment.
- Always check the unit for possible damage before use. If you suspect that something is wrong with the unit, do not connect it to a power source! When you suspect that your unit is broken or damaged, contact your local dealer or a certified technician to inspect the unit.

AYRA

Any information and illustrations shown in this user manual are subject to change without further notice.

User manual version: 1.0 Creation date + author initials: 22-04-2015 RV Revision date + author initials: -

Device overview



Main fixture

- 1. Electronic mounting bar
- 2. Spotlight
- 3. Stand adapter (35mm)

Foot controller

- 4. Menu button
- 5. UP button
- 6. Suspend button (blackout)
- 7. Connection cable with locking connector

Mounting feet

- 7. Metal bracket
- 8. Rubber foot
- 9. Screw set for mounting feet (included)

Spotlight

- 10. Housing
- 11. Reflector
- 12. Removable lens



Any information and illustrations shown in this user manual are subject to change without further notice.

User manual version: 1.0 Creation date + author initials: 22-04-2015 RV Revision date + author initials: -



- 12. External fuse (for power outputs, F7A/250V)
- 13. Power input, IEC C14, 100-230 V AC, 50 Hz
- 14. DMX output (3p XLR)
- 15. DMX input (3p XLR)
- 16. Foot controller input (5p locking aviation plug)
- 17. Power output, IEC C13
- 18. LED menu display with menu buttons (menu, down, up, enter)
- 19. Built-in microphone
- 20. Spotlight locking connectors
- 21. Mounting feet with attached screws

Light stand

- 22. Adjustable feet
- 23. Height-adjustable tube

Transporting bag

- 24. Bag with zippers
- 25. Handle
- 26. Foot controller and cable compartment



Any information and illustrations shown in this user manual are subject to change without further notice.

User manual version: 1.0 Creation date + author initials: 22-04-2015 RV Revision date + author initials: -

Important notice!

Power inputs & outputs

The ComPar Kit fixtures have independent fuses for the bar itself and the power outputs. They are directly connected to the AC power input which they share. The internal wiring of the fixture is built to withstand a max. total load of 16 A.

The ComPar Kit fixture electronics are equipped with an F3A 20mm fuse.

The Power outputs are equipped with an F7A 20mm main fuse, which bears the total load for the power outputs. Every power output is capable of being loaded with 7 A max., but the combined load for both outputs cannot exceed 7 A. Doing so will result in blowing the internal fuse. Even though the bar may withstand a larger load, the 7A fuse is chosen for safety reasons. No problems will occur when connecting one, two or several LED lighting fixtures. Connecting fixtures with a high power consumption (such as fog machines) is not recommended by Ayra.

Any load greater than 16 A total on the power outputs will also cause the 7A fuse to blow. In addition to that, chances are high that the circuit breaker of your power circuit may also cut the power, causing other fixtures connected to the circuit to deactivate due to the loss of power.

The fuses inside the ComPar Kit act independently of each other. Therefore, any power issues with connected lighting fixtures that cause the output fuse to blow, will not result in problems for the bar itself, so it will keep running and prevent total blackout.

It is theoretically possible to connect a total of 10 ComPar Kit 3 fixtures in a single line, without power problems (as the maximum power capacity of the power outputs combined is 1,610 W).

Setting up the unit

The ComPar KIT series comes with a practical tripod light stand. Extract the feet of the stands until they are fully extended. Pull the distance tube out until you reach the appropriate installation height and tighten the knob. Use the included safety pin to ensure that the stand will not slide down. Place the ComPar KIT bar on the stand. To activate the unit, connect the included power supply to the unit and a suitable 230V, 50Hz power outlet. The unit will activate directly after it is plugged in to a wall outlet or other power source.

The status of the fixture is shown on the display. Certain values determine the current status and will change when you push buttons on the control panel. The buttons each have their own function, for easy navigation in the control panel.

Display codes:

display	Mode	Function	Description
ADDR	DMX address setting	A001-A512	Set the DMX start address by choosing a value between 1 and 512.
CHND	Channel mode	1-channel mode 3-channel mode 7-channel mode 12-channel mode 16-channel mode	Select the DMX channel mode, which determines how many channels the unit will fill on your DMX controller. More channels = more specific functionality
SLND	Master/Slave mode	Slave 1-2 or master operating mode	NOTE: Only possible by connecting two ComPar KIT 3 units with each other by 3p XLR cable. Set the unit to Slave 1 or 2. In music mode, slave 2 will switch between mirrored and synced operation mode. Slave 1 is standard synced mode.
SHND	Show mode	Show 1 - Show 8 + AUTO	Select any internal automatic show for stand-alone applications When selecting the AUTO mode, you can also select a preferred speed to run the programs to.
SOUN	Sound mode	Sound on/off	Activate or deactivate the internal microphone and the music-controlled mode
SENS	Sound sense	Sound sensitivity 0-100	Select the sensitivity of the internal microphone, for the sound-activated mode
BLND	Blackout mode	LED mode, YES – NO	Activates or deactivates the beam output for the LED projectors
LED	Display on/off	LED YES – NO	Shuts down the display when not used after 30 seconds
DISP	Display inversion	Display Inversion, Idsp-dspl	Inverts the display, when the unit is used upside-down as a large floor spotlight with floor stands. This makes it easier to read certain display statuses.
TEST	Test mode	Self test	Self-test program, projects all colours separately. This makes it possible to check if there are defective LED modules.
Hour	Using time of light	Fixture hours, 0 ~ 9999	Displays the run time of the fixture. Used by rental companies to

Any information and illustrations shown in this user manual are subject to change without further notice.

User manual version: 1.0 Creation date + author initials: 22-04-2015 RV Revision date + author initials: -

			determine service/maintenance intervals.
UERS	version	Software version, Ver XXX	Firmware software version, not upgradeable by users

Foot controller features:

Suspend	Blackout of the unit (no light whatsoever)		
Menu/up	Strobe 1. Synchronous strobe in white 2. Sound strobe in white 3. Sound strobe in colour	Select colour - Red - Green - Blue - Red + Green - Red + Blue - Green + Blue - Red + Green + Blue - Colour change by sound	Select Show 1 – 8

Operating modes:

Stand-alone (automatic): Select one of the internal programs, which will activate and run in a continuous loop.

Music-controlled mode (sound-activated): Activate the internal microphone by using the display and set the right sensitivity for optimal music-controlled shows. Select one of the predefined shows. The show will change step by step when sound is detected.

Master/slave mode (sync mode): Connect two or multiple ComPar KIT 3 systems with a standard 3p male to 3p female XLR cable. The first system will act as a master fixture, the second system will mimic the actions of the first system, thus creating synchronised effects.

To ensure that this function works properly, use the DMX OUT connector of the first system and the DMX IN connector of the second system. Set the second system to Slave 1 or Slave 2 mode (synchronised or mirrored mode). Connecting more than 1 slave is possible, with a maximum of 16 units.

The Master/slave mode also works when using the included foot controller. Connect the foot controller to the first fixture with the 5P connector, then feed the signal through from fixture to fixture with the DMX inputs and outputs.

NOTE: The master/slave mode of the Compar Kit 3 is compatible with the master/slave mode of the Compar Kit 1 and 2. However, the specified floor controllers are not interchangeable between the Compar Kit 1 / 2 and the Compar Kit 3!

DMX mode: The most extensive operating mode, as this function gives you the ability to control the system with a standard DMX-512 controller, using the 3p DMX inputs and outputs. Select one of the several channel modes and set the right starting address. After this, you have full control over the system with your DMX controller.

This unit has the following DMX channels and DMX values:

1 Channel Mode

CH1	Chase	000-007 Blackout 008-037 Show 01 038-067 Show 02 068-097 Show 03 098-127 Show 04 128-157 Show 05 158-187 Show 06 188-217 Show 07 218-247 Show 08 248-255 Random Show 01-08
------------	--------------	---

3 Channel Mode

CH1	Red	000-255 Dimmer 0-100%
CH2	Green	000-255 Dimmer 0-100%
CH3	Blue	000-255 Dimmer 0-100%

7 Channel Mode

CH1	Red	000-255 Dimmer 0-100%
CH2	Green	000-255 Dimmer 0-100%
CH3	Blue	000-255 Dimmer 0-100%
CH4	Dimmer	000-255 Dimmer 0-100%
CH5	Strobe	000-007 No function 008-247 Strobe slow to fast 248-255 Sound strobe
CH6	Colour chase	000-007 Manual colour mix 008-022 Colour chase 1 023-037 Colour chase 2 038-052 Colour chase 3 053-067 Colour chase 4 068-082 Colour chase 5 083-097 Colour chase 6 098-112 Colour chase 7 113-127 Colour chase 8 128-142 Colour chase 9 143-157 Colour chase 10 158-172 Colour chase 11 173-187 Colour chase 12 188-202 Colour chase 13 203-217 Colour chase 14 218-232 Colour chase 15 233-247 Colour chase 16 248-255 Stand-alone
CH7	Speed	000-007 Hold 008-255 Speed slow to fast

12Channel Mode

CH1	Red 1	000-255 Dimmer 0-100%
CH2	Green 1	000-255 Dimmer 0-100%
CH3	Blue 1	000-255 Dimmer 0-100%

Any information and illustrations shown in this user manual are subject to change without further notice.

User manual version: 1.0 Creation date + author initials: 22-04-2015 RV Revision date + author initials: -

CH4	Red 2	000-255 Dimmer 0-100%
CH5	Green 2	000-255 Dimmer 0-100%
CH6	Blue 2	000-255 Dimmer 0-100%
CH7	Red 3	000-255 Dimmer 0-100%
CH8	Green 3	000-255 Dimmer 0-100%
CH9	Blue 3	000-255 Dimmer 0-100%
CH10	Red 4	000-255 Dimmer 0-100%
CH11	Green 4	000-255 Dimmer 0-100%
CH12	Blue 4	000-255 Dimmer 0-100%

16 Channel Mode

CH1	Red 1	000-255 Dimmer 0-100%
CH2	Green 1	000-255 Dimmer 0-100%
CH3	Blue 1	000-255 Dimmer 0-100%
CH4	Red 2	000-255 Dimmer 0-100%
CH5	Green 2	000-255 Dimmer 0-100%
CH6	Blue 2	000-255 Dimmer 0-100%
CH7	Red 3	000-255 Dimmer 0-100%
CH8	Green 3	000-255 Dimmer 0-100%
CH9	Blue 3	000-255 Dimmer 0-100%
CH10	Red 4	000-255 Dimmer 0-100%
CH11	Green 4	000-255 Dimmer 0-100%
CH12	Blue 4	000-255 Dimmer 0-100%
CH13	Dimmer	000-255 Dimmer 0-100%
CH14	Strobe	000-007 No function 008-247 Strobe slow to fast 248-255 Sound strobe
CH15	Colour chase	000-007 Manual 008-022 Colour chase 1 023-037 Colour chase 2 038-052 Colour chase 3 053-067 Colour chase 4 068-082 Colour chase 5 083-097 Colour chase 6 098-112 Colour chase 7 113-127 Colour chase 8 128-142 Colour chase 9 143-157 Colour chase 10 158-172 Colour chase 11 173-187 Colour chase 12 188-202 Colour chase 13 203-217 Colour chase 14 218-232 Colour chase 15 233-247 Colour chase 16 248-255 Stand-alone
CH16	Speed	000-007 Hold 008-255 Speed slow to fast

Any information and illustrations shown in this user manual are subject to change without further notice.

User manual version: 1.0 Creation date + author initials: 22-04-2015 RV Revision date + author initials: -

Installation and maintenance

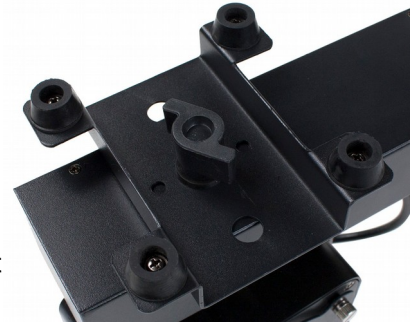
Installing the system in a standing position (right side up)

The ComPar KIT 3 is equipped with a 35mm stand adapter, which makes it possible to position the system on a standard speaker or light stand. A double screw knob is provided to tighten the system, so it is unable to pivot. This also prevents unwanted rattle noise caused by speaker vibrations, and possible instability as tube diameters of stands may vary slightly.



Installing the fixture in a standing position (inverted)

It is possible to use the LED projectors as a floor spotlight system, for example when you want to use them for uplighting purposes. For this feature, use the screw knobs at the top of the system and mount a floor stand on each side (included). Use the menu option to invert the display status for easy reading of values. After this, flip the system and position the bar as you wish.



Installing the fixture in a suspended position

When installing the system in a suspended position (for example, on a truss construction), detach the screw knobs and install proper G-clamps or half couplers (not included).

NOTE: When installing the system in a suspended position, the following list of safety precautions must be met:

- Use at least two rigging points (clamps), for optimal stability and safety.
- Use at least one (recommended amount: 2) safety cable(s), capable of holding 5x the weight of the system. Safety cables must be installed in such a way that it is impossible for the system to fall down when one of the two rigging points breaks.
- It is prohibited to install the system by using only safety cables or chains!

The warranty is void if any of the above safety precautions are not met. Ayra cannot be held responsible if any damage or injury occurs due to improper use of the system.

Lens mechanism

The Compar Kit 3 spotlights are equipped with a standard lens. As the standard dispersion of a COB LED is very wide, users may want to change the dispersion angle for different purposes. The Compar Kit 3 has standard lenses installed in front of the spotlights, mounted with two knobs. By loosening the knobs, the lenses can be removed and stored in the transport bag. The standard dispersion angle of the Compar Kit 3 is about 30 degrees. When the lens is removed, the dispersion is approximately 120 degrees - ideal for wall washing, hall ambient lighting and much more! The overall intensity of the Compar Kit 3 may appear to be brighter if the lens is installed. This is caused by the dispersion of the light intensity over a smaller surface.

Transport

If you use this fixture in a mobile setup, make sure to provide sufficient protection during transport. Always use the provided transport bags to protect the system and included lighting stand.

Replacing the internal fuses

First check whether a failing power supply may be the cause of malfunction. When you suspect that one of the internal fuses is broken, the fuse can be replaced after removing the fuse cover, located on the rear of the fixture, near the power inputs, outputs and control menu.

WARNING: Before checking the fuse, always disconnect the fixture from your wall outlet or any other power supply to prevent electric shocks.

Always replace the broken fuse with a fuse of the same type and rating. After the fuse has been replaced, always close the fuse cover. Reconnect the fixture to your power supply and check whether the problem is solved. If not, contact your local dealer for help.

Spare parts

This unit has no user-serviceable parts inside. When any damage to internal components occurs, contact

Any information and illustrations shown in this user manual are subject to change without further notice.

User manual version: 1.0 Creation date + author initials: 22-04-2015 RV Revision date + author initials: -

your local dealer or a specialised technician in order to repair the fixture.

Cleaning:

Clean the housing of the fixture frequently with a damp cloth, to remove dust and/or dirt.

WARNING: Always disconnect the fixture from your wall outlet or other power supply and let the fixture dry before reconnecting it. This prevents possible electric shocks.

The lenses can be cleaned with a non-aggressive glass cleaning solution, but this is not recommended. Ayra advises cleaning the mirror and lens with a fine brush, while removing dust and/or dirt with a vacuum cleaner. Avoid touching the lenses with your bare fingers, to prevent fingerprints on the optics.

Check-up

To prevent dangerous situations, make sure your fixture is in optimal condition before using it. Check your fixture frequently by using the following check list:

- All screws must be mounted tightly.
- Check all screws and metal parts for corrosion. No visible corrosion may be present.
- The exterior of your fixture must be in optimal condition. Check your fixture for dents, cracks or missing parts.
- Your installation spot must be in optimal condition. Check your installation spot for corrosion, cracks, dents and strength.
- Electrical components (connectors and cables) must be in optimal condition. No form of damage (cuts, exposed wire cores or any other irregularities) should be visible.

If any visual or mechanical damage is detected, contact your local dealer or a specialised technician. Do not use a damaged or failing fixture.

AYRA

Connectors and wiring schematics:

DMX connectors:

DMX-output

XLR mounting-socket:




DMX-input

XLR mounting-plug:



Electrical wiring:

Cable	Pin	International
Brown	Live	L
Blue	Neutral	N
Yellow/Green	Earth	

Any information and illustrations shown in this user manual are subject to change without further notice.

User manual version: 1.0 Creation date + author initials: 22-04-2015 RV Revision date + author initials: -

DMX lighting troubleshooting

If you have any problems with DMX lighting, consult this troubleshooting section to solve the difficulties with your product. If this troubleshooting section does not solve your problem, contact your dealer for more information and help.

This troubleshooting section contains the most frequent problems and is not a complete collection of possible faults, defects and solutions. The troubleshooting section applies for DMX controllers, DMX cabling and DMX lighting fixtures. It is possible that not all described problems, causes and solutions apply to your situation as product details may vary from product to product.

Problem	Possible Cause	Solution
The fixture does not activate itself	Blown fuse	Check the fuse compartment for blown fuses and replace them if necessary
	No power cable plugged in	Plug in the power supply into a suitable power outlet
	Power switch is not in the ON position	Turn the device on by switching the ON/OFF switch to the ON position, if available
The fixture does not respond to DMX signals	Wrong DMX address	Set the DMX address to the right value
	DMX controller blackout function activated	Deactivate the blackout function of your DMX controller
	Faulty positioning of the DMX polarity switch on the controller	Flip the polarity switch on your DMX controller
	No response or DMX activity signal LEDs active	Check your DMX cables for possible connector breaks and replace them if necessary
The fixture does not respond to sound	Wrong operating mode selected.	Check if the sound-activated mode of the fixture is activated.
	Microphone sensitivity level is set too low	Increase the sensitivity level of the built-in microphone
	Speaker placed too far away or lack of bass	Place your light effect closer to your speakers (or vice versa) and/or increase low-frequency volumes. The microphone will not be triggered by high-pitched sounds.
The beam output is very low	Dirty/dusty optics	Clean the lens and/or other optics with a dry or damp cloth
	Dimmer is not set to full output	Set all dimmer levels to 100% on your DMX console
Sometimes the DMX signal is lost and/or some fixtures are flickering / behaving oddly	Faulty/broken DMX cables	Check your DMX cables for possible connector breaks and replace them if necessary.
	Power cable interference on your DMX signal	Avoid installing the DMX and (high) power cables parallel to

Any information and illustrations shown in this user manual are subject to change without further notice.

User manual version: 1.0 Creation date + author initials: 22-04-2015 RV Revision date + author initials: -

		each other.
	No DMX terminator	Insert a DMX terminator at the end of your DMX chain
	Signal loss or distortion in DMX values	Insert a DMX booster in your DMX chain after 32 fixtures or less. After a maximum of 32 fixtures the DMX signal needs to be refreshed.
The fixture does not respond to all DMX channels	Wrong DMX channel mode	Check the DMX channel mode of the fixture. If the wrong value is set, change the channel mode to a different setting and try again.

ALURA

Any information and illustrations shown in this user manual are subject to change without further notice.

User manual version: 1.0 Creation date + author initials: 22-04-2015 RV Revision date + author initials: -

Technical specifications

- compact light system
- equipped with four projectors
- projectors individually adjustable
- amazing colour mixing thanks to COB RGB LED light source
- removable lens, change the dispersion angle from 30 to 120 degrees!
- automatic, sound-activated, master-slave and DMX operating modes
- compatible with Compar Kit 1 and 2
- two selectable 'Slave' modes
- microphone sensitivity digitally adjustable for sound-activated mode
- several DMX channel modes (1, 3, 7, 12 or 16 channels)
- LED display with menu buttons
- display invert
- IEC C14 power inlet
- tightening knobs at the top for extra projectors
- integrated stand adapter with tightening knob
- included foot controller, for easy light show control by musicians and DJs
- included light stand, for easy plug-and-play setups
- included transport bag for the system + light stand for optimal safety and convenience during transport and storage
- power requirements: 110 - 230 V AC, 50/60 Hz
- power consumption: 170 VA
- two power outputs, suitable for powering other ComPar kits, ComPar fixtures or (LED) light fixtures
- ComPar Kit fuse: F3A, 20mm glass
- power outputs fuse: F7A, 20mm glass
- total weight: 10.5 kg

LED light source:

- for each spotlight: 30W COB RGB LED chip with reflector

Projector features:

- four separate projectors on each system
- equipped with heat sinks for optimal cooling and long lifespan
- wide-angle manual pan and tilt for each projector individually, for optimal beam adjustment
- solid cable from every projector to the main bar
- amazing colour mixing thanks to COB LED technology
- removable lens to adjust the light dispersion for any purpose
- included and easy-to-mount uplighting feet, for wall washing and uplighting purposes

Connectors:

- DMX: 3p XLR male and female
- power in: IEC C14 male chassis
- power out: IEC C13 female chassis
- foot controller: 5p Aviation

Included accessories:

- 1x light stand
- 1x foot controller with connection cable
- 1x padded case for ComPar Kit 3
- 1x light stand bag
- 1x power cable IEC C13 to Schuko (3x 1mm²)
- 1x power cable IEC C13 to UK plug (3x 1mm²)
- 2x uplighting feet
- 6x tightening knob (2 for stand adapter, 4 for top mounting)

Technical details:

Any information and illustrations shown in this user manual are subject to change without further notice.

User manual version: 1.0 Creation date + author initials: 22-04-2015 RV Revision date + author initials: -

- LED current mA (A): 667 mA
- total power (W): 96.9 W (please calculate with 170 W of power when connecting this device because of the power factor)
- power factor (PF): 0.571 PF
- AC current mA (A): 0.738 A
- surface temperature during use: 48 degrees Celsius

Light output data, measured with 30-degree angle, 1 spotlight:

Red LED:

- 931 lux @ 1 m
- 250 lux @ 2 m
- 45 lux @ 5 m

Green LED:

- 1,299 lux @ 1 m
- 342 lux @ 2 m
- 62 lux @ 5 m

Blue LED:

- 1,740 lux @ 1 m
- 510 lux @ 2 m
- 93 lux @ 5 m

RGB LED:

- 3,775 lux @ 1 m
- 1073 lux @ 2 m
- 196 lux @ 5 m